



## POLICY OF QUALITY, ENVIRONMENTAL PROTECTION, INDUSTRIAL SAFETY AND ENERGY CONSERVATION OF KRAIBURG TPE TECHNOLOGY (M) SDN. BHD.



KRAIBURG TPE is an international company producing thermoplastic elastomer compounds. Our strengths are customized solutions and the development of new applications. Our strategic goals are continued growth, the expansion of our international business and continuous innovation.

In order to achieve these objectives, we have developed a process-oriented, integrated management system that meets the requirements of ISO 9001 and ISO 14001 also taking into account all aspects and specifications related to environment, energy and safety. Specific requirements of the automotive industry can be taken into account in close consultation with our customers.

The success of our business depends on the success of our customers and the well-being of our employees. Their needs are therefore a key concern in all our activities. In addition, we aim at meeting the expectations of our shareholders, our suppliers, government and society as a whole.

We want to understand what our customers wish and expect from us. We take steps to identify their needs and all future challenges at an early stage, in order to develop reliable solutions. Our customers and suppliers are our partners with business relationships based on sustainable mutual benefit.

As a company, we operate within a framework of statutory regulations. Any relevant statutory regulations must be strictly adhered to by all the employees concerned. All legally binding regulations and instructions by the authorities are strictly adhered to by all our employees.

Our corporate culture is reflected in the behavior and conduct of the company executives and employees. We foster a working environment where communication is open and constructive, where information is shared and where people cooperate with a clear focused on objectives. We are willing to talk about errors and mistakes so that we can avoid them in the future and learn from what went wrong in the past. We promote continuous training and are committed to enhance our skills level.

We condemn forced labor and child labor. We dissociate ourselves from any form of discrimination and promote equality of opportunity complying with all applicable labor laws and statutory social welfare regulations.

With regard to environment protection, occupational safety and energy management, it is our objective to protect resources, reduce or possibly avoid emissions and waste and to take all suitable measures to prevent accidents.

We are careful about our physical and mental sense of well-being. The company supports our employees by running special contests and health campaigns.

Our management system is binding for all employees and must be adhered to in all activities.

The objectives and quantities targets established within our management system serve as references for our pro-active correction, prevention and improvement processes. Our continuous improvement and development thus reflects our concept of a company as a learning organization.

In our work, we produce quality as we are skilled in our tasks and processes. With our management system, we strive at achieving perfect quality products.

We regularly evaluate our performance, risks and the effectiveness of our management system based on the established targets. By taking specific measures and implementing projects, we continuously improve our performance around quality, workplace safety, environment protection and energy consumption at all levels and in all areas.

August 2016

**Franz Hinterecker**  
CEO

**Roland Ritter**  
Managing Director Asia-Pacific





# Towards A Green & Safe Environment

*"We take our responsibility towards society and future generations seriously and act accordingly."*

Franz Hinterecker, CEO KRAIBURG TPE

## 1. Our commitment to environmental protection through our materials



KRAIBURG TPE's thermoplastic elastomers can be recycled up to 100%.



Our thermoplastic elastomer's uncured molecular chains can be melted down again & again.



This characteristic allows the thermoplastic elastomers to be led back into the manufacturing process.

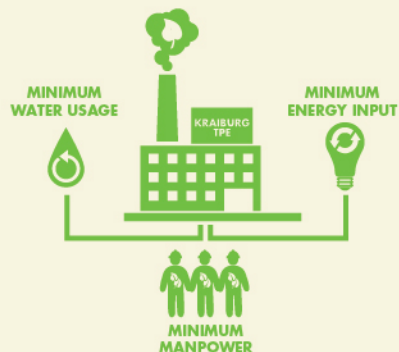


The result: saving precious natural resources & preserving the environment.

## 2. Our commitment to environmental protection through our suppliers, and for our customers



We choose our raw material suppliers by evaluating their commitment to quality & the environment.



For our customers, we develop compounds that require minimum energy input.

## 3. Our commitment to environmental protection through our packaging



We use recycled packaging for all our products

## 4. We draw up an annual environmental, energy and occupational safety programmes



### Energy Awareness Day



Group photo at Malaysia Energy Commission's Diamond Building



Energy Awareness Training for KTM Staff



1st Prize for 2 teams of EHS Quiz



3rd Prize for team of EHS Quiz

### Fire Fighting Training



Dark Room Simulation



Training on controlling hose reel



## Fire Fighting Training



Victim Rescue Simulation



Fire Fighting Simulation



## Fire Drill



Emergency Respond Team



Activation of the  
Emergency Response Team



Gather at the assembly point



## First Aid



Simulation of building  
collapse accident



Simulation on rescuing victim



First Aid Team



## Go Green!



Eco Tour Briefing



Eco Tour Group Photo



Animal Feeding



Fun and educational farm  
tour lead by experience  
tour guides



# Energy Awareness Campaign

Be part of our energy vision



## WHAT

- Continuously managed and developing of energy management system (EnMS) and 100% compliance to ISO50001 standard in 2017.
- Reduce KTM's energy consumption 1.5% by the end of FY2017.

## WHY

Because KTM cares about our customers, employees, communities and our world. Reducing unnecessary energy consumption means lower energy costs, lesser carbon emissions and carbon footprint. We do this to build better customer relationships, healthier and safer work environment for our employees, and to promote a green, sustainable environment for everyone.

## HOW

By reducing unproductive energy use. Here are some of the initiatives we are focusing on to improve our energy efficiency.

### Production Floor & Warehouse



Minimum  
Energy Input



Minimum Water  
Usage



Switch Off  
Appliances



Switch Off  
Appliances



Unplug Battery/  
Phone Chargers



Energy Saving  
Lightbulbs



Energy Saving  
Aircon



Energy Saving  
Lightbulbs



Energy Saving  
Aircon



Sleep Or  
Hibernate Mode



Sleep Or  
Hibernate Mode



Automation  
Saves Energy



Insulation



Minimum Water  
Usage

### Office

## WHO

**YOU!** We all play an important role in energy conservation, for today and the future of the next generation. We can help turn off lights and appliances when not needed or not in use, and follow proper shutdown procedures for equipment and machinery. If we all do our part, together we can build a more profitable and sustainable KTM to our stakeholders, employees, customers and the community.



# Health & Safety Guidelines

KRAIBURG TPE Malaysia is committed towards providing a safe and healthy working environment for all employees, contractors, and visitors inside our premises and operation sites. The health and safety wellbeing of our employees, contractors, and visitors are of paramount important. We will conduct our business with the firm belief that all occupational illnesses and diseases, workplace injuries and environmental accidents can be avoided by complying with the EHS standards, procedures and best practices at all times

## CORPORATE PROTECTION GUIDELINES

1.

**NO CAMERAS**



**NO VIDEOS**

No photography or video-taking is allowed on our premises unless special permission has been obtained.

2.



**NO FOOD ALLOWED**

Food and beverages are STRICTLY PROHIBITED beyond this point, except in designate areas, i.e. the cafeteria.

## FOR YOUR SAFETY

1.



**NO SMOKING**

Smoking is STRICTLY PROHIBITED across all our sites, except in designate areas, i.e. the cafeteria.

2.



**FORKLIFT CROSSING AREA**

Exercise caution along logistics routes & open spaces. Watch out for factory vehicle traffic such as our eletronicly powered forklifts, which have general priority.

3.



**SPEED LIMIT**

The 15 km/h speed limit must be observed at all times throughout our work premises.

## FOR YOUR SAFETY

4.



Never leave the group or stray away from a designated zone.

5.



**HIGH-HEELED SHOES**

Open-toed, open-heeled or high-heel shoes are prohibited in the production floors.

## PERSONAL PROTECTIVE EQUIPMENT MUST BE WORN AT OPERATIONS AREA

6.



**PROTECTIVE FOOTWEAR**

7.



**FIRE ALARM**

If alarm siren is activated, immediately shutdown any equipment or machinery and evacuate the premises.

8.



**EMERGENCY EXIT**

In any emergency, leave the premises via the emergency escape exits and escape routes. Help any injured persons. Follow all instructions from First Aid and Fire Team personnel

9.



**EVACUATION ASSEMBLY POINT**

Make your way to any of the designated assembly points and await for further instructions. Report any missing colleagues to KRAIBURG TPE operations management at the assembly point.

10.



**EMERGENCY TELEPHONE**

All incidents and near-misses must be reported to your KRAIBURG TPE contact person(s) or call our internal emergency number 03-8934 1393.

## 999 EMERGENCY CONTACT NUMBER

Police Taming Jaya  
03-8962 2222

Bomba Serdang  
03-8941 6281

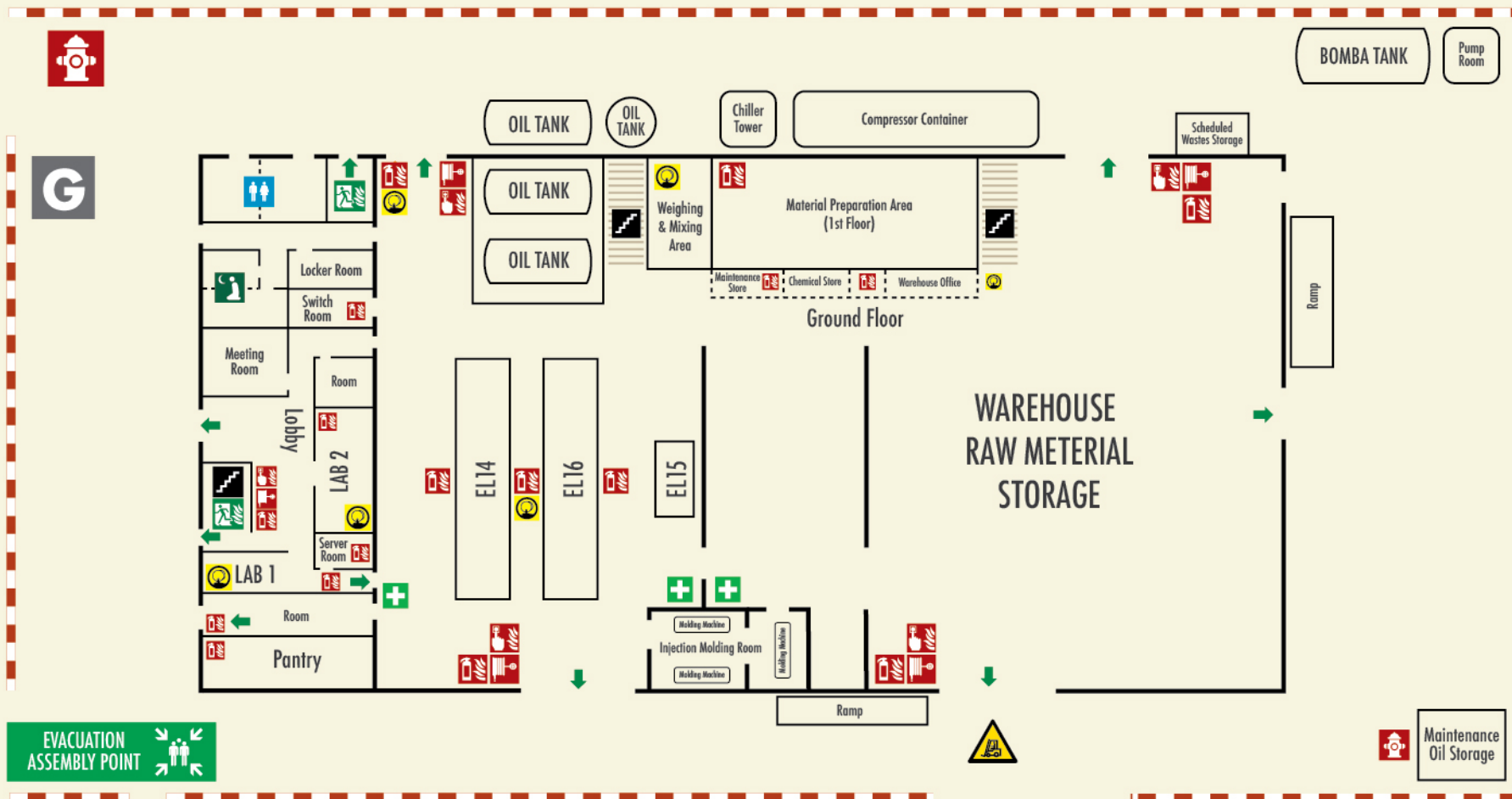
Hospital Serdang  
03-8947 5555

Police Damai Perdana  
03-9105 6222

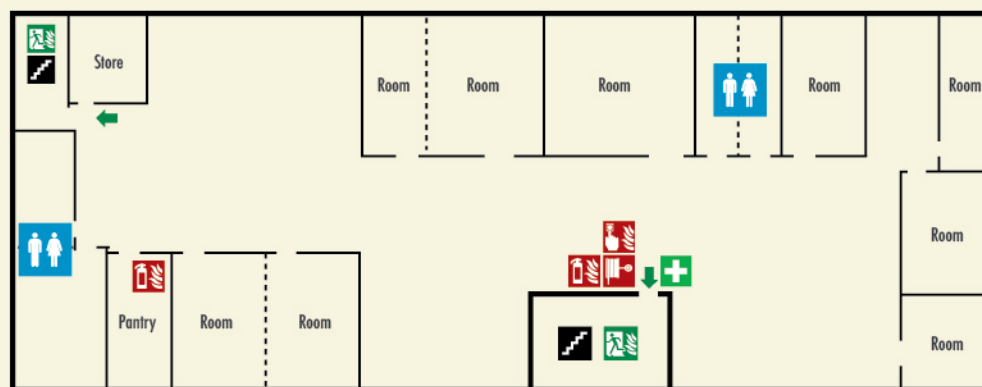
Bomba Sungai Besi  
03-9058 4444

# BLOCK A

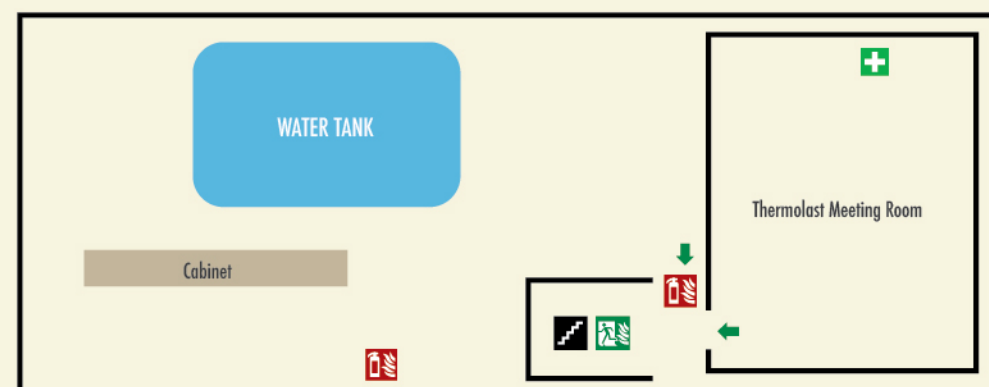
## Building



Ground Floor



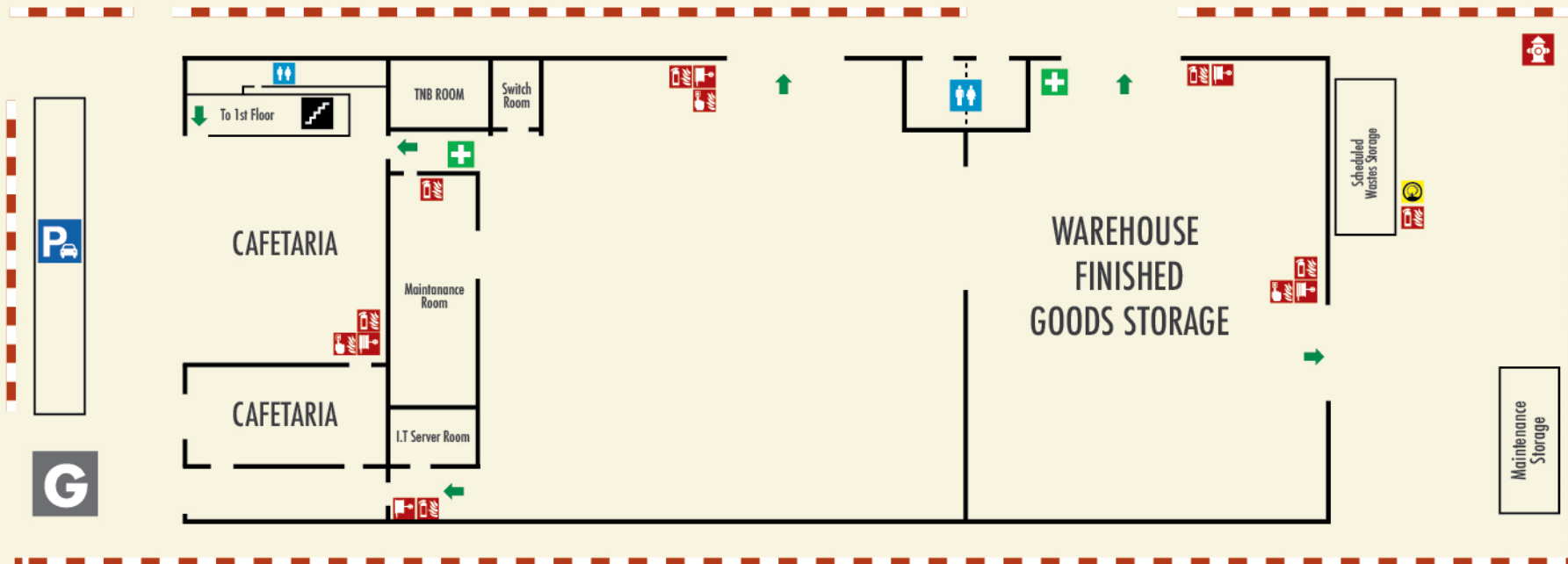
1st Floor



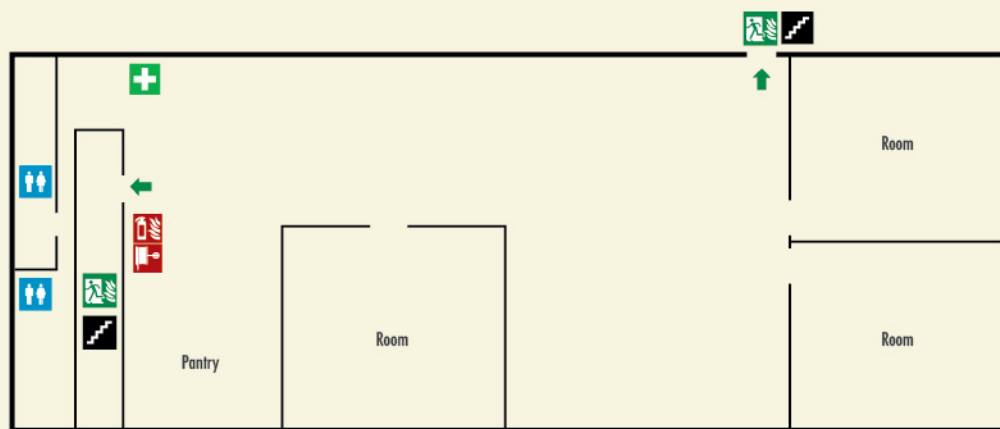
2nd Floor

# BLOCK B

## Building



Ground Floor


















1st Floor



2nd Floor

### LEGEND

														
Guard House	Car Park	Restroom	Praying Room	Evacuation Assembly Area	First Aid Kit	Fire Exit	Fire Hose	Fire Extinguisher	Break Glass Panel	Fire Hydrant	Spill Kit	Forklift Crossing Area	Staircase	Escape Route